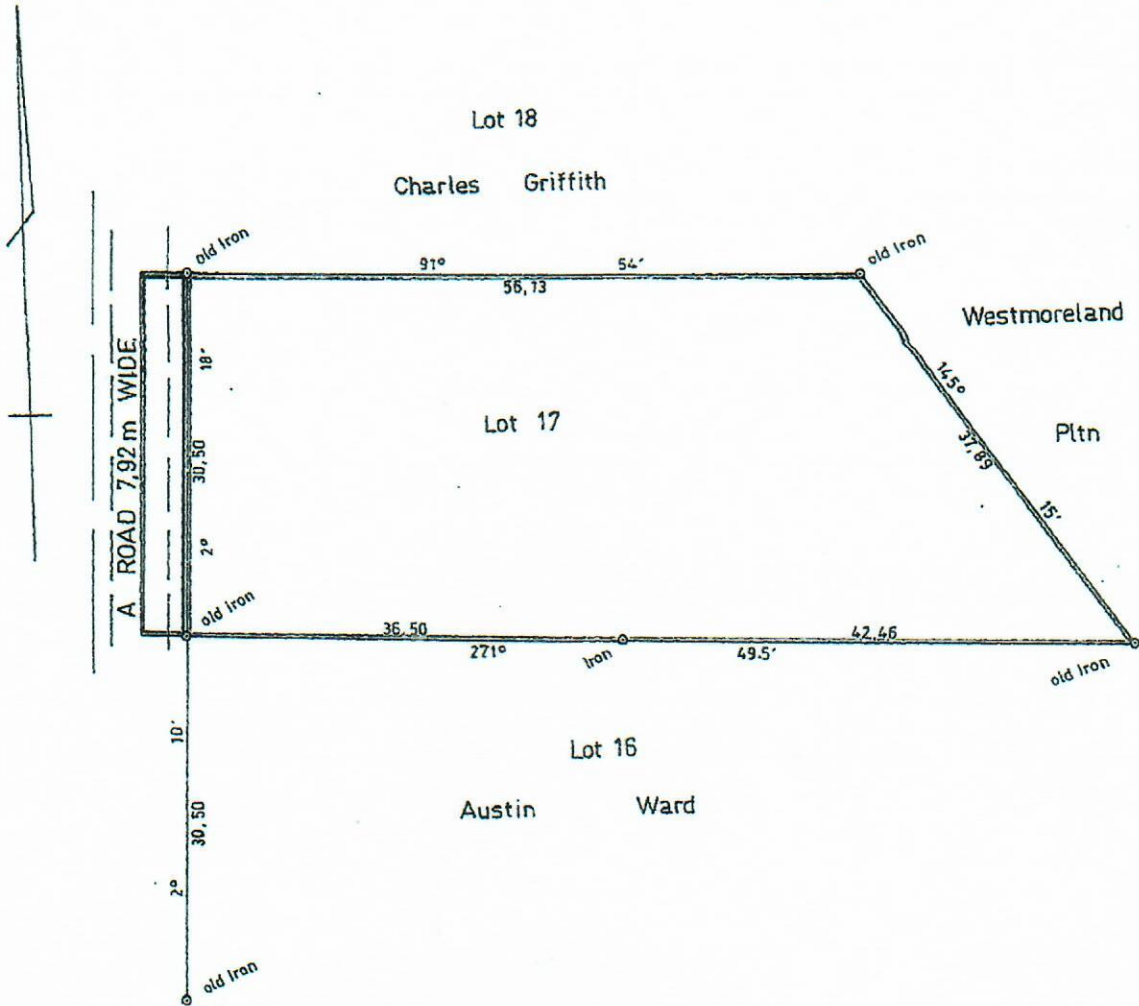


B 3006-5



Barbados

PLAN OF LAND

at LOT 17, WESTMORELAND, ST JAMES.

containing

2 057,3	m ²	IN LAND
120,8	m ²	IN ROAD
<hr/>		
2 178,1	m ²	

surveyed for SENATOR AMORY PHILLIPS

Certified 19th September 1991

R. Parravicino

ROGER N. PARRAVICINO
Land Surveyor

SCALE 1:500

Distances are in metres
Bearings are referred to Grid North
derived from Solar Azimuth

For Lands and Surveys Dept. only

